



Czech

# CERTIFICATE

Certification Body Management System No. 3053  
TÜV SÜD Czech s.r.o.

certifies that



**Pa a Ha - opravy a revize zdvihacích zařízení  
a jeřábových drah s.r.o.**

**Dukelská 5910**

**CZ - 430 01 Chomutov**

**Ident. No.: 49099388**

*The list of sites / associated certificates is stated in the annex to this certificate, the annex is its integral part and contains 1 page.*

has established and applies  
a Quality Management System for

**production, assembly and inspections of steel constructions  
and lifting equipment, production, assembly, repairs, servicing  
and inspections of lifting devices, cranes and crane tracks**

An audit was performed, Report No. **15.305.199**

Proof has been furnished that the requirements  
according to

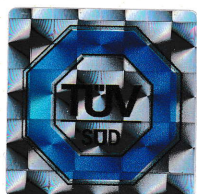
**ČSN EN ISO 9001:2016 in conjunction  
with ČSN EN ISO 3834-2:2022**

are fulfilled.

The certificate is valid from **02.08.2023** until **11.06.2024**

Certificate Registration No. **13.784.933**, revision No. **1**

This certificate is a revision of the certificate No. 13.784.933, issued 17.06.2021.



Prague, 02.08.2023



Details and terms of validity are given in the annex to this certificate, which is its integral part and contents 1 page.

TÜV SÜD Czech s.r.o. • Novodvorská 994 • 142 21 Prague 4 • Czech Republic • [certification.cz@tuvsud.com](mailto:certification.cz@tuvsud.com)

TÜV®





Czech

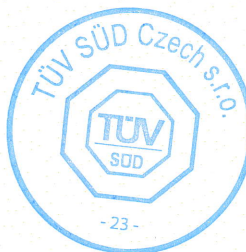
## Scope

1. **Kind of products:** steel constructions; cranes, crane tracks – assembly, overhauls of reconstruction, maintenance; assembly of flexible base of rails and posts – “GANTREX” system
2. **Standards used by certified organization:**
  - 2.1 Product standards: EN 1090, EN 1993, ČSN 73 5130
  - 2.2 Process standards (EN ISO 3834-5): ISO 9606-1, ISO 14732, ISO 9712, ISO 13916, ISO 14731, ISO 15607, ISO 15609-1, ISO 15614-1, ISO 15614-7, ISO 17637, ISO 17662
  - 2.3 Standards other than EN/ISO: --
3. **Groups of basic materials (according to CEN ISO/TR 15608):** 1.1
4. **Welding processes and similar processes:**

Welding processes (according to ISO 4063)	Groups of basic materials (according to CEN ISO/TR 15608)
111	1.1
135	1.1

5. **Authorized employees of the welding supervision:**

Name	Qualification	Work function	Degree (according to ISO 14731)
Vlastimil Sláma	IWT	welding supervision	6.2.3







Czech

**The list of sites / associated certificates**

Name and address of the site	Scope of audited activity	Registration No. of the associated certificate
<b>Pa a Ha - opravy a revize zdvihacích zařízení a jeřábových drah s.r.o.</b> Dukelská 5910 430 01 Chomutov	production, assembly and inspections of steel constructions and lifting equipment , production, assembly, repairs, servicing and inspections of lifting devices, cranes and crane tracks	-
<b>Pa a Ha - opravy a revize zdvihacích zařízení a jeřábových drah s.r.o.</b> Malá Veleň 58 405 02 Děčín	assembly, repairs, servicing and inspections of lifting devices, cranes and crane tracks	-

